



## Luxury Villa Living

### Nandana



Nandana, *paradise* in Sanskrit, a tropical hideaway beyond imagination. Within an exclusive, gated enclave at the far West End of Grand Bahama island, our palatial and richly-appointed Asian style mansion is a luxurious and exceedingly private oceanfront estate that combines the freedom of residential living with the bespoke services and amenities of the best five star hotels. From candlelit dinners served under the stars to fine Italian linens gracing the custom made beds, every nuance and detail has been carefully chosen to perfect your experience.

Find us, a hidden treasure, and you will find paradise.

6 Bedrooms  
Sleeps 12  
Located on Grand Bahama, Bahamas  
Beachfront  
Fully Staffed



## Luxury Villa Living





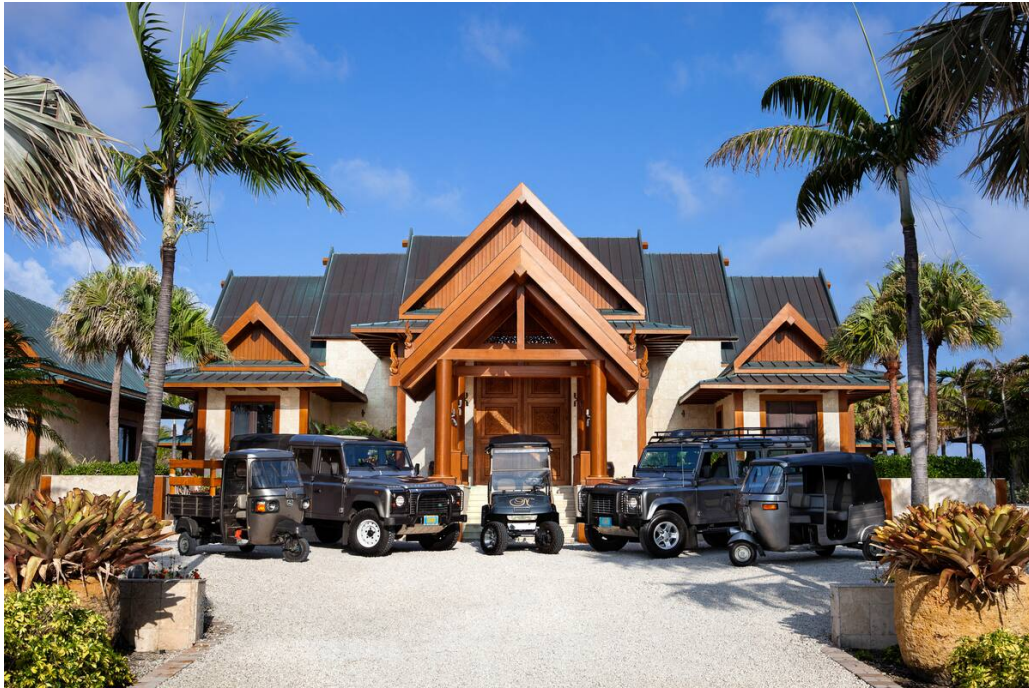


## Luxury Villa Living





## Luxury Villa Living







## Luxury Villa Living





Luxury Villa Living







## Luxury Villa Living





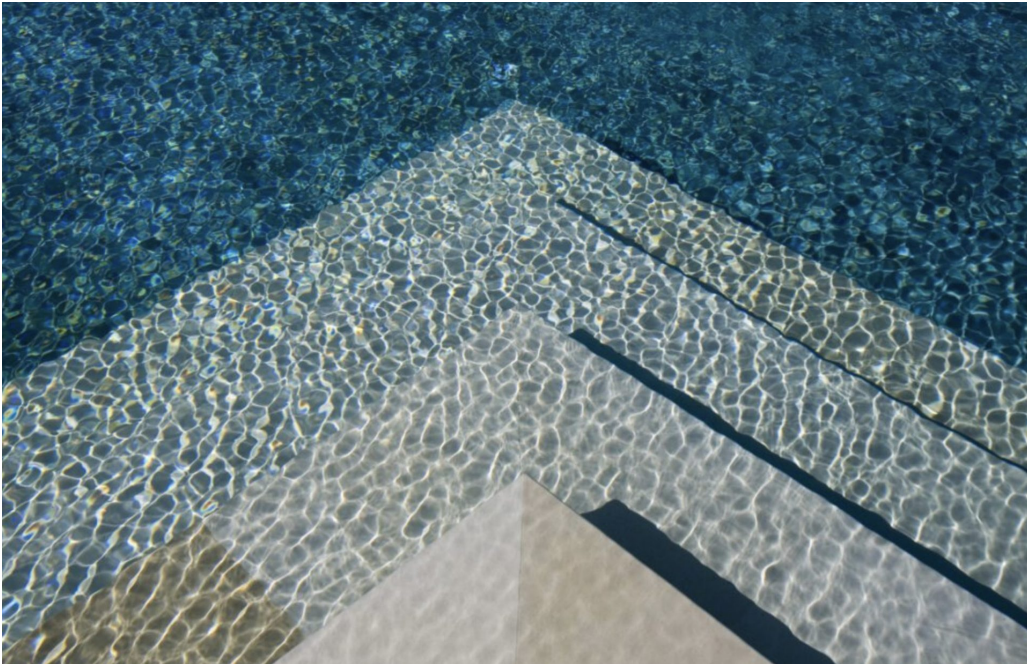
## Luxury Villa Living







Luxury Villa Living





## Luxury Villa Living







## Luxury Villa Living





## Luxury Villa Living







## Luxury Villa Living





## Luxury Villa Living







## Luxury Villa Living





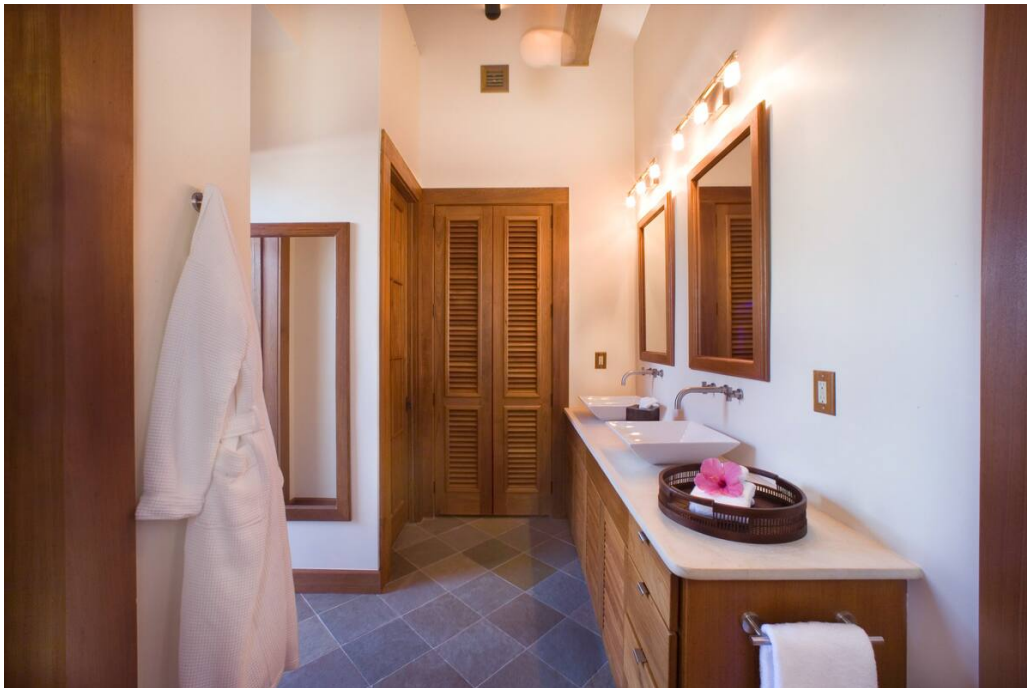
## Luxury Villa Living







Luxury Villa Living





Luxury Villa Living







## Luxury Villa Living





## Luxury Villa Living







## Luxury Villa Living

### DESCRIPTION

Nandana is a super-deluxe, oceanfront estate located in the exclusive West End of Grand Bahama Island. A stunning blend of East and West, this magnificent and exceedingly private island home has been specially created for intimate gatherings of family or friends. Together, the four richly appointed bedroom suites and custom-made safari-style bedroom tent can accommodate groups of up to 12 persons in complete and total comfort.

Nandana is beyond anything you have experienced. Designed by a renowned internationally acclaimed architect in an Asian beach-house style, the compound is situated at the edge of gentle lapping waves on a secluded, private beach. Crisp sea breezes roll through the open areas gently stirring the palm-tree gardens.

Inside, you will find the finest quality furnishings, art and amenities. Guests can slip into the separate outdoor Jacuzzi overlooking the beach. Or, should a helping hand be required to relax, our spa offers professional massage facilities from our masseuse.

The main building contains the primary socialising areas, including living areas, dining room, kitchen, bar, and glass-enclosed wine room.

Standing on either side of the main building and directly on the beach are two exceptionally large one-bedroom Pavilion suites. Each is in excess of 1000 square feet and contains a luxury bath with a tub, indoor/outdoor shower, walk-in closet, writing desk, mini bar, and private sundeck with chaises overlooking the sea.

A few steps back from the beach, amidst gardens of swaying palms and tropical greenery, are two one-bedroom Bangala (bungalow) suites. Each Bangala Suite offers more than 750 square feet of luxurious living space with a bedroom, sitting area, large bath with indoor/outdoor shower, writing desk, and mini-bar.

Along the canal, under swaying palms, rises our 2000-square-foot luxury air-conditioned safari tent with a separate bedroom, bath, and living area. The tent is fully furnished and contains the same TV, wireless internet, and other services as the Pavilions and Bangalas.

Nandana's suites and the tent contain remote-controlled flat-screen satellite and cable TV, iPod docking stations, and stereo. All suites have computer-controlled lighting, air conditioning systems, and security systems.

The entire property, including all bedrooms and living area rooms, pool, etc., has wireless internet service. The property also includes a gym with state-of-the-art cardio and weight equipment and a business center with full office facilities (satellite and cable internet, fax, etc.) A private masseuse is on staff offering Asian-style massage and other spa services, day or evening. Tennis courts are located within walking distance.

At Nandana, a full range of indoor and outdoor activities lie at your fingertips. A 50' deep sea fishing yacht, a 15' inflatable tender, jet skis, off road all terrain vehicles, fishing gear, snorkeling equipment, bicycles, volleyball, CD, and DVD libraries are all located at the



## Luxury Villa Living

property and available for guest use. A golf course is just a short drive away, and a full range of adventures, including private air charters to neighbouring islands, picnics on deserted island beaches, world-class bone fishing, scuba, swimming with dolphins, shark diving, casino nights, and more, are easily arranged.

### Amenities

Gated community with 24/7 Security Patrol  
Alarm System  
Safe In Each Room  
Swimming Pool  
Jacuzzi  
Spa Facilities  
Gym  
WiFi  
Jet Ski  
Beach Volleyball  
Air Conditioning  
Satellite TV  
Deep Sea Fishing Boat  
Bicycles

### Staff

Estate manager  
Chef  
Masseuse  
Boat Captain  
Chauffeur  
Housekeeping  
Further Staff Available on Request

### Flights

Here at Luxury Villa Living, we help you to create the perfect package. We can source and organise scheduled and chartered flights upon your request.

### The Extras

We offer personalised and complimentary concierge services with each booking to make things as easy and stress-free as possible. From car hire to special restaurant reservations and more specific requests, we create a bespoke experience that is specially tailored for you





# Luxury Villa Living

## Location

