



Luxury Villa Living

Sky Cove



Sky Cove is a beautiful new private beachfront estate on the calm Caribbean side of Eleuthera, near famous Ten Bay Beach.

7 Bedrooms
Sleeps 17

Located in Governor's Harbour, Eleuthera, Bahamas



Luxury Villa Living





Luxury Villa Living





Luxury Villa Living



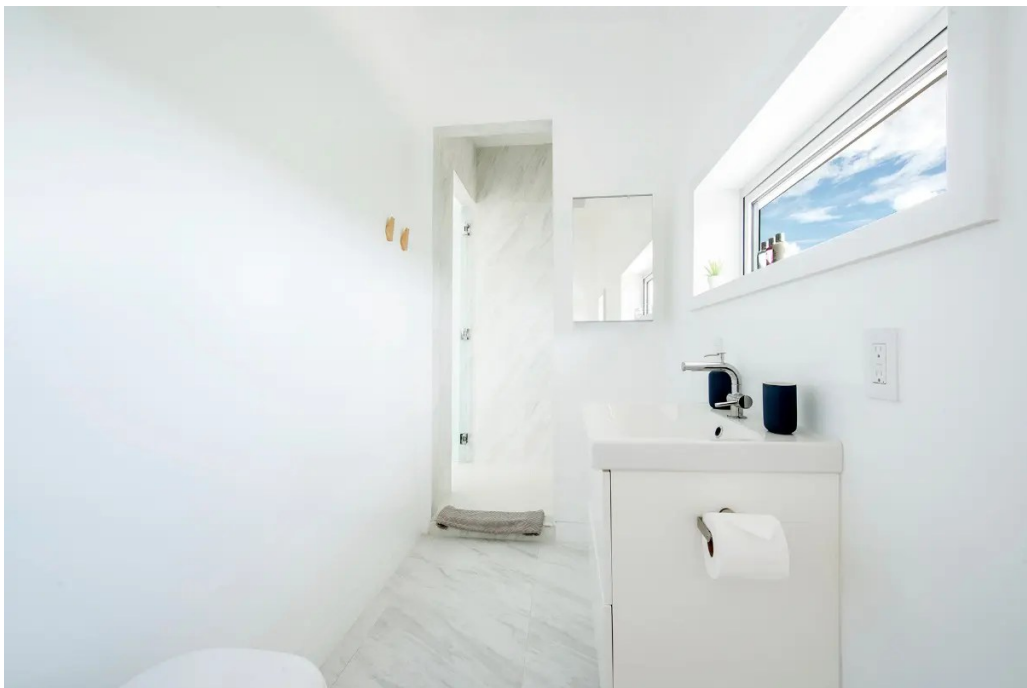


Luxury Villa Living





Luxury Villa Living





Luxury Villa Living





Luxury Villa Living





Luxury Villa Living





Luxury Villa Living





Luxury Villa Living





Luxury Villa Living

DESCRIPTION

Sky Cove's private beach is located on a secluded cove perfect for swimming, SPECTACULAR SNORKELING, kayaking, paddle-boarding, fishing, and mooring your boat! This spectacular property was used by Venus swimwear for the photo shoot for their summer 2020 catalog.

Overlooking this lovely beach and cove is a 50-foot ocean-view infinity pool with a Baja shelf for lounging. The pool is surrounded by a deck with sweeping ocean views, furnished for lounging and dining. A fire pit for evening entertainment awaits. Beside the pool is bocce ball court! The pool can be heated for \$500 per week.

We just upgraded to Starlink for faster and more reliable internet!

Inside, a marble-tiled foyer with a powder room and a stairway taking you up to the main level. At the top of the stairs you encounter the most spectacular room on the island, a living room of glass with 270° views of Eleuthera and the sea through floor-to-ceiling walls of glass. This room is furnished for both lounging and dining and has an adjacent secondary guest kitchen. Past this room are four king-bed master suites with full en-suite baths and spectacular ocean views through walls of glass. Each suite has its own entrance from the balcony that runs the full length of the second floor. These four rooms can also connect internally if needed.

Continuing up the stairs from the glass living room takes you to the upper sky deck, a large room furnished with a sectional sofa and chairs and a flat screen TV and offering panoramic views of sea and island. The sectional sofa folds out into two single beds. There are also two inflatable beds (1 double and 1 single) which can be set up in this room, so it can be used as a sleeping loft (the 7th bedroom) for up to 5 guests. It can also be used as a media room or lounge.

From this room, step out onto Sky Cove's incredible roof deck. (This door has a child-proof lock for security.) This glass walled roof deck, perched high above the trees, offers 360-degree views of sea, beach, and island. Luxuriously furnished with lounge seating this is the best spot on the island to enjoy a beverage and watch the sun rise and set.

Sky Cove has two additional master bedroom suites, the "bungalows", which are detached from the main house for ultimate privacy. Each suite has a king bed, full bath, and spectacular ocean views through a wall of glass. The bungalows are included for groups of more than 8 guests.

In addition to the kitchen mentioned above, Sky Cove has a primary extra-large caterer's kitchen with a separate entrance. This kitchen is equipped with modern appliances, washer/dryer, two full-size refrigerator/freezers, eat-in breakfast bar, beverage bar, and a dining area that seats eight. Adjacent to the caterer's kitchen is a gas BBQ area with a large outdoor dining area that seats 12 to 16.

Amenities



Luxury Villa Living

Swimming Pool
WiFi
Air Conditioning
Smart TVs
Kayaks
Paddle Boards

Staff

Staff Available on Request

Flights

Here at Luxury Villa Living, we help you to create the perfect package. We can source and organise scheduled and chartered flights upon your request.

The Extras

We offer personalised and complimentary concierge services with each booking to make things as easy and stress-free as possible. From car hire to special restaurant reservations and more specific requests, we create a bespoke experience that is specially tailored for you

Location

Eleuthera, Bahamas

